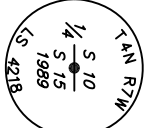


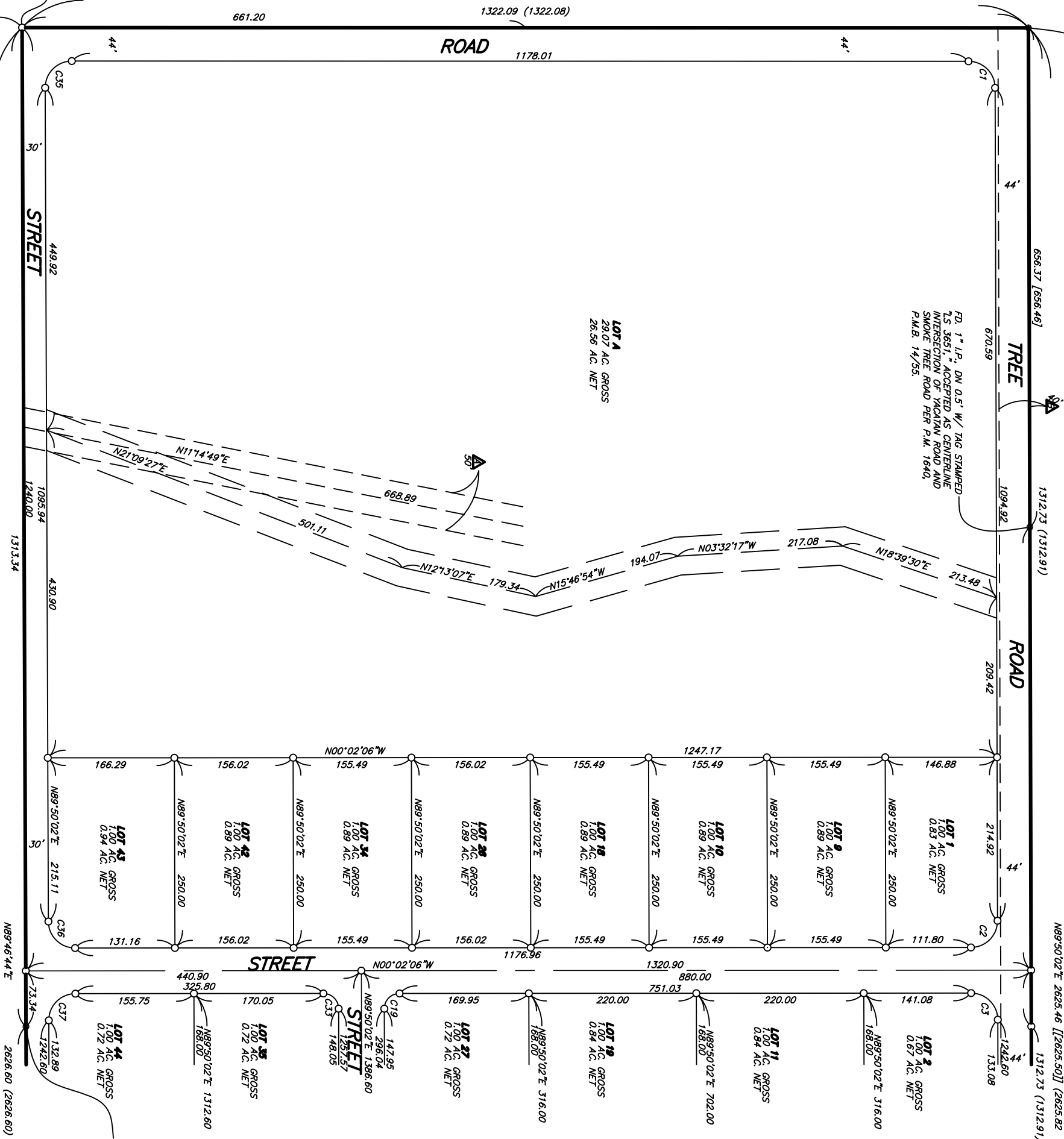


# TRACT MAP XXXXX

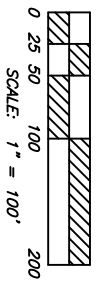
FD. 2" IP. FLUSH LEANING N.E.V. W/ BRASS CAP STAMPED AS SHOWN. DID NOT ACCEPT POSITION. SET 2" IP. DN 0.5' STAMPED AND SET AS SHOWN ON DETAIL. A PER CSFB 489/96 AND ROW MONUMENTS PER P.M. 1640, P.M.B. 14/55, P.M. 7198, P.M.B. 69/40, P.M. 9858, P.M.B. 108/91-92



FD. 1" IP. DN 0.5' W/ TAG STAMPED 7.5 3651. " ACCEPTED AS CENTERLINE INTERSECTION OF YACATAN ROAD AND SMOKE TREE ROAD PER P.M. 1640, P.M.B. 14/55.



SEE SHEET 6



**SURVEYOR'S NOTES:**

- THE BASIS OF BEARING FOR THIS SURVEY IS THE EAST LINE OF THE S 1/2 OF THE NE 1/4 OF SECTION 15, BEING N00°19'19"W PER P.M. 7416, P.M.B. 75/46-47, RECORDS OF COUNTY.
- INDICATES FOUND MONUMENT AS NOTED.
- INDICATES SET 1" IP. 18" IN LENGTH WITH PLASTIC PLUG & TAG, STAMPED 7.5. 5091". UP 3". OR AS NOTED.
- ( ) INDICATES RECORD DATA PER P.M. 9858, P.M.B. 108/91-92.
- [ ] INDICATES RECORD DATA PER P.M. 1640, P.M.B. 14/55.
- [ ] INDICATES RECORD DATA PER C.S. 14150.
- << INDICATES RECORD DATA PER P.M. 7416, P.M.B. 75/46-47.
- >> INDICATES RECORD DATA PER P.M. 9366, P.M.B. 100/25-26.
- R&M INDICATES RECORD DATA PER P.M. 7198, P.M.B. 69/40.
- INDICATES RECORD AND MEASURED.
- SDOE INDICATES COUNTY DRAINAGE EASEMENT.
- ▲ INDICATES AN EASEMENT, 50 FEET IN WIDTH, FOR DRAINAGE AND FLOWAGE PURPOSES, IN FAVOR OF COUNTY OF B&M, RECORDED SEPTEMBER 18, 1986 AS INSTRUMENT NO. B&M-270991, OFFICIAL RECORDS COUNTY.
- ▲ INDICATES AN EASEMENT, 40 FEET IN WIDTH FOR WATER LINES, IN FAVOR OF COUNTY RECORDED JUNE 6, 1985 AS INSTRUMENT NO. B&M-135588, OFFICIAL RECORDS.

**CURVE TABLE**

CURVE LENGTH	RADIUS	TANGENT	DELTA
C1	34.87	35.00	34.89
C2	35.00	35.00	35.00
C3	35.00	35.00	35.00
C4	35.00	35.00	35.00
C5	35.00	35.00	35.00
C6	35.00	35.00	35.00
C7	35.00	35.00	35.00
C8	35.00	35.00	35.00
C9	35.00	35.00	35.00
C10	35.00	35.00	35.00
C11	35.00	35.00	35.00
C12	35.00	35.00	35.00
C13	35.00	35.00	35.00
C14	35.00	35.00	35.00
C15	35.00	35.00	35.00
C16	35.00	35.00	35.00
C17	35.00	35.00	35.00
C18	35.00	35.00	35.00
C19	35.00	35.00	35.00
C20	35.00	35.00	35.00
C21	35.00	35.00	35.00
C22	35.00	35.00	35.00
C23	35.00	35.00	35.00
C24	35.00	35.00	35.00
C25	35.00	35.00	35.00
C26	35.00	35.00	35.00
C27	35.00	35.00	35.00
C28	35.00	35.00	35.00
C29	35.00	35.00	35.00
C30	35.00	35.00	35.00
C31	35.00	35.00	35.00
C32	35.00	35.00	35.00
C33	35.00	35.00	35.00
C34	35.00	35.00	35.00
C35	35.00	35.00	35.00
C36	35.00	35.00	35.00
C37	35.00	35.00	35.00
C38	35.00	35.00	35.00

SEARCHED PD. NOTHING. SET 1" IP. 18" IN LENGTH, DN. 0.5' W/ PLASTIC PLUG AND TAG STAMPED 7.5 5091" BY SPUR DISTANCE FOR CN 1/16 COR. SEC.15.

FD. 1" IP. FLUSH W/ PLASTIC PLUG STAMPED 7.5 4218. NO REF. ACCEPTED AS POINT ON THE CENTERLINE OF AVENUE STREET.

# TRACT MAP XXXX

SET 1" I.P., 18" LONG, DN 0.5" W/ PLASTIC PLUG AND TAG STAMPED "S 5091" FOR E 1/16 COR., SEC 15/10, FD. 1" I.P., UP 0.1" W/ PLASTIC PLUG STAMPED "HELIG LS 4218" PER P.M. 9858, P.M.B. 108/91-92, N21°10'32"E, 0.18' FROM SET I.P. FD. 3/4" I.P. FLUSH, W/ TAG STAMPED "RCE 6820" PER P.M. 9858, P.M.B. 108/91-92, S79°19'15"E, 0.53' FROM SET I.P.

FD. 5/8" REBAR, DN. 0.1' ADJACENT TO FD. 2" I.P. FLUSH, BENT ELY. W/ BRASS CAP STAMPED AS SHOWN, DID NOT ACCEPT POSITIONS, SET 2" I.P. DN. 0.5" STAMPED AND SET AS SHOWN ON DETAIL "B" PER CSFB 489/35 AND ROW MOVEMENT PER P.M. 9858, P.M.B. 108/91-92.

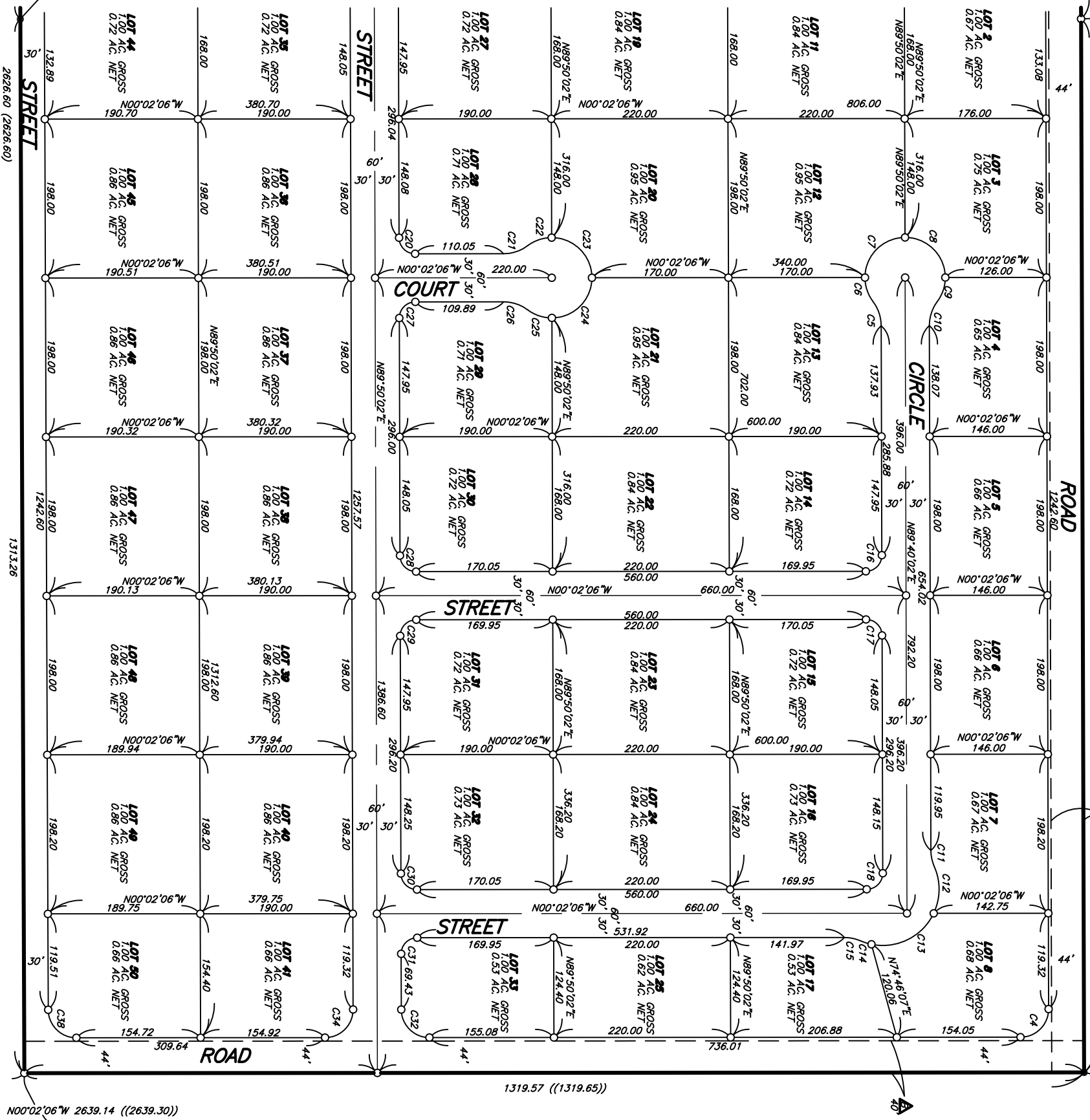


### SURVEYOR'S NOTES.

THE BASIS OF BEARING FOR THIS SURVEY IS THE EAST LINE OF THE S 1/2 OF THE NE 1/4 OF SECTION 15, BEING N00°01'19"W PER P.M. 7416, P.M.B. 75/46-47, RECORDS OF COUNTY.

- INDICATES FOUND MONUMENT AS NOTED.
- ( ) INDICATES SET 1" I.P., 18" IN LENGTH WITH PLASTIC PLUG & TAG, STAMPED "S. 5091"; UP 3"; OR AS NOTED.
- [ ] INDICATES RECORD DATA PER P.M. 1640, P.M.B. 14/55.
- < > INDICATES RECORD DATA PER C.S. 14150.
- (( )) INDICATES RECORD DATA PER P.M. 9366, P.M.B. 75/46-47.
- << >> INDICATES RECORD DATA PER P.M. 7198, P.M.B. 69/40.
- R&M INDICATES RECORD AND MEASURED.
- SBODE INDICATES COUNTY DRAINAGE EASEMENT.
- ▲ INDICATES AN EASEMENT, 50 FEET IN WIDTH, FOR DRAINAGE AND FLOWAGE PURPOSES, IN FAVOR OF COUNTY OF RECORDED SEPTEMBER 18, 1986 AS INSTRUMENT NO. 86-270991, OFFICIAL RECORDS COUNTY.
- △ INDICATES AN EASEMENT, 40 FEET IN WIDTH FOR WATER LINES, IN FAVOR OF COUNTY, RECORDED JUNE 6, 1985 AS INSTRUMENT NO. 85-135588, OFFICIAL RECORDS COUNTY.

SEE SHEET 5



1319.57 ((1319.65))

N00°02'06"W 2639.14 ((2639.30))

CURVE	LENGTH	RADIUS	ANGEMENT	DELTA
C1	54.87	35.00	34.89	88.48 11°
C2	55.06	35.00	35.08	90.07 52°
C3	54.90	35.00	34.92	89.54 08°
C4	55.08	35.00	35.09	90.52 72°
C5	55.20	50.00	16.73	37.00 04°
C6	28.43	50.00	49.89	89.52 08°
C7	28.65	50.00	50.11	90.07 52°
C8	32.06	50.00	16.60	36.44 20°
C9	32.18	50.00	16.67	35.52 12°
C10	20.63	50.00	10.46	23.38 18°
C11	60.02	20.00	35.01	90.07 52°
C12	14.44	20.00	2.20	11.44 56°
C13	20.56	50.00	10.43	23.33 53°
C14	20.56	50.00	10.43	23.33 53°
C15	31.46	20.00	20.05	90.07 52°
C16	31.46	20.00	20.05	90.07 52°
C17	31.46	20.00	20.05	90.07 52°
C18	31.46	20.00	20.05	90.07 52°
C19	31.46	20.00	20.05	90.07 52°
C20	31.46	20.00	20.05	90.07 52°
C21	31.46	20.00	20.05	90.07 52°
C22	32.09	50.00	16.62	36.46 20°
C23	28.65	50.00	50.11	90.07 52°
C24	28.43	50.00	49.89	89.52 08°
C25	32.20	50.00	16.73	37.00 04°
C26	32.18	50.00	16.73	37.00 04°
C27	31.46	20.00	20.05	90.07 52°
C28	31.46	20.00	20.05	90.07 52°
C29	31.46	20.00	20.05	90.07 52°
C30	31.46	20.00	20.05	90.07 52°
C31	31.46	20.00	20.05	90.07 52°
C32	31.46	20.00	20.05	90.07 52°
C33	31.46	20.00	20.05	90.07 52°
C34	55.06	35.00	35.14	90.14 07°
C35	55.12	35.00	35.14	90.14 07°
C36	54.86	35.00	34.89	89.48 11°
C37	54.86	35.00	34.89	89.48 11°
C38	54.86	35.00	34.89	89.48 11°

FD. 1" I.P. FLUSH, W/ PLASTIC PLUG STAMPED "HELIG LS 4218" NO REF. ACCEPTED AS POINT ON THE CENTERLINE OF AVENUE STREET.

132.89  
STREET  
2626.60 (2626.60)

1313.28

ROAD

SEARCHED FD. NOTHING, SET 1" I.P., 18" IN LENGTH, DN 0.5" W/ PLASTIC PLUG AND TAG STAMPED "S 5091" BY SPLIT DISTANCE FOR N 1/16 COR., SEC. 15 AND 14, SEE DETAIL "C" FD. 3/4" I.P. FLUSH AND LEMING N.I.P., STAMPED "S 2892 DECKER" PER CSFB 489/06, N20°47'40"E, 0.56' FROM SET I.P.