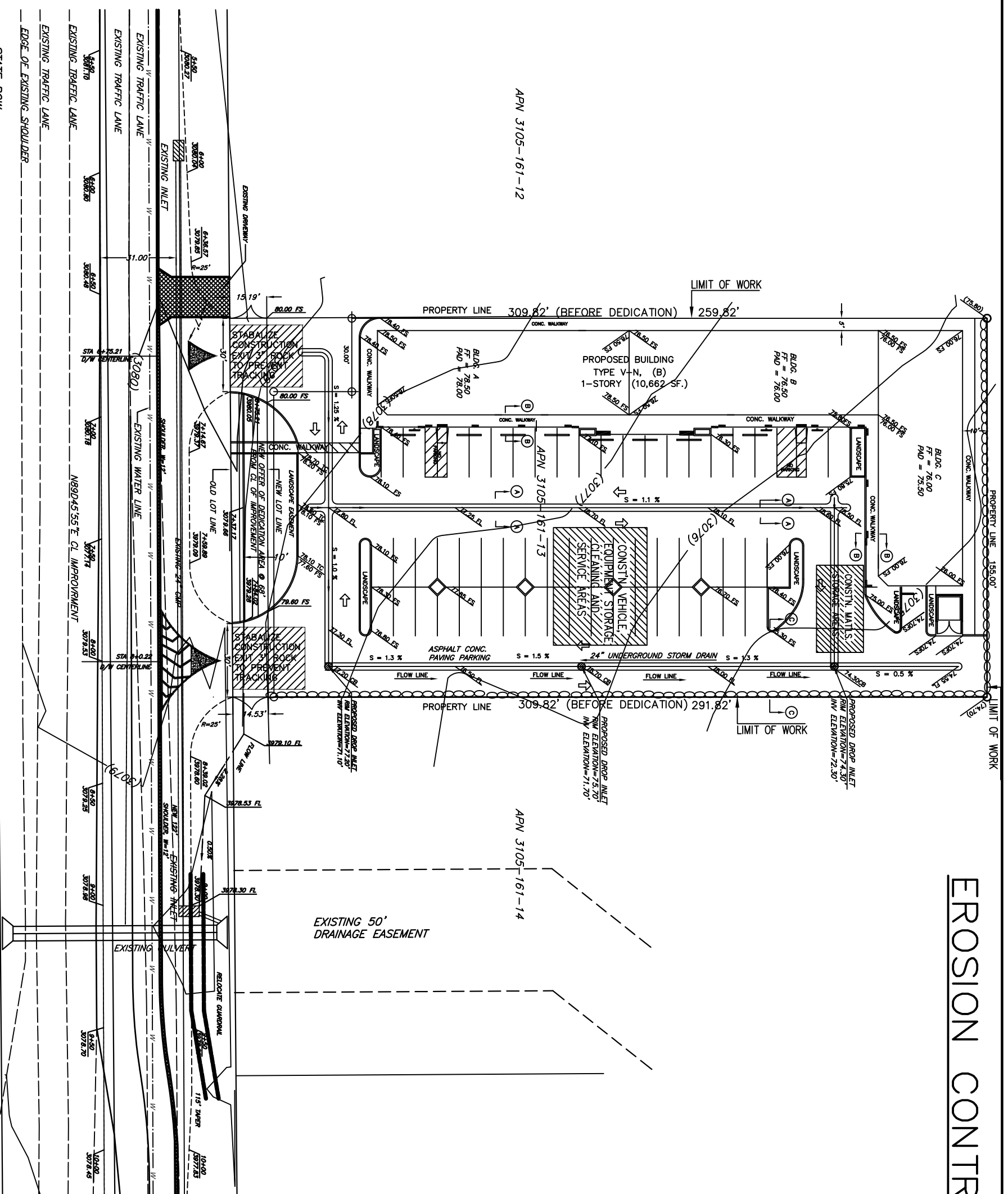


EROSION CONTROL PLAN



EROSION CONTROL PLAN GENERAL NOTES

1. PLACEMENT FOR EROSION CONTROL IS REQUIRED FOR GRADING OPERATIONS DURING THE RAINY SEASON (OCTOBER 15TH TO APRIL 15TH)
 2. THE DESIGN CIVIL ENGINEER SHALL SUPERVISE EROSION CONTROL WORK AND INSURE THAT WORK IS IN ACCORDANCE WITH THE APPROVED GRADING PLAN. IF REQUIRED, EQUIPMENT AVAILABLE AT ALL TIMES.
 3. NECESSARY MATERIALS SHALL BE MADE AVAILABLE ON SITE AND STOCKPILED AT CONVENIENT LOCATIONS TO FACILITATE RAPID CONSTRUCTION OF TEMPORARY DEVICES WHEN RAIN IS IMMINENT.
 4. DEVICES SHALL NOT BE MOVED WITHOUT THE APPROVAL OF THE CITY ENGINEER.
 5. ALL REMOVABLE PROTECTIVE DEVICES SHOWN ON THE EROSION CONTROL PLAN SHALL BE IN PLACE AT THE END OF EACH DAY WHEN THE FINE DRY RAIN PROBABILITY FORECAST EXCEEDS FORTY PERCENT (40%).
 6. FOR A RAINSTORM, ALL SILT AND DEBRIS SHALL BE REMOVED FROM CHECK BERMS, SILT FENCES, RESULTING BASINS AND THE BASINS PUMPED OUT.
 7. GRADED WORK AREAS AROUND THE PROJECT AT PERIMETER MUST DRAIN AWAY FROM THE FACE OF THE SLOPE. AT THE CONCLUSION OF EACH WORKING DAY.
 8. THE CONTRACTOR SHALL BE RESPONSIBLE AND SHALL TAKE NECESSARY PRECAUTIONS TO PREVENT PUBLIC TRAFFIC FROM AREAS WHERE IMPROVED WATER CREATES HAZARDOUS CONDITIONS. COMPLETE PERMANENT GRADING PLANS SHALL BE SUBMITTED AND APPROVED PRIOR TO CONSTRUCTION OF ANY GRADING WORK.
 9. TEMPORARY EROSION PROTECTION IS REQUIRED FOR MANUFACTURED SLOPES PRIOR TO PERMANENT PLANNING. ALL SLOPES EXCEEDING THREE FEET IN HEIGHT SHALL USE A PLANTING MIX FOR BASIC EROSION CONTROL MIX.
- | GRADES/ACRES | PURITY | P.S. |
|--------------|--------|------|
| 20.0 | 8% | 81% |
| 20.0 | 8% | 81% |
| 20.0 | 8% | 81% |
| 20.0 | 8% | 81% |
11. ALL AREAS SHALL BE MAINTAINED IN SUCH A MANNER THAT THE FIRE ACCESS SHALL BE MAINTAINED AT ALL TIMES (INCLUDING ACCESS TO NEIGHBORING PROPERTY) IN CASE OF EMERGENCY.
 12. NO OBSTRUCTION OR DISTURBANCE OF NATURAL DRAINAGE COURSES OR EXISTING STORM DRAIN INLETS SHALL OCCUR DURING THE RAINY SEASON UNLESS ADEQUATE TEMPORARY/PERMANENT DRAINAGE FACILITIES HAVE BEEN APPROVED AND INSTALLED TO CARRY SURFACE WATER TO THE STREET. STORM DRAIN INLETS SHALL BE KEPT OPEN AND UNBLOCKED AT ALL TIMES.
 13. THE CONTRACTOR SHALL CONDUCT HIS OPERATIONS IN SUCH A MANNER THAT THE STORM RUN-OFF WILL BE CONTAINED WITHIN THE PROJECT OR CHANNELLED INTO THE STORM DRAIN SYSTEM THAT SERVES THE RUN-OFF AREA. STORM RUN-OFF FROM AN AREA SHALL NOT BE ALLOWED TO DIVERT INTO ANOTHER RUN-OFF AREA.
 14. CONFORMANCE WITH THE EROSION CONTROL PLAN DOES NOT RELIEVE THE CONTRACTOR FROM HIS RESPONSIBILITIES TO PREVENT THE EROSION OF ADJACENT AREAS. THE CONTRACTOR SHALL BE RESPONSIBLE FOR PREVENTING EROSION OF ADJACENT AREAS BY LIMITED TO CONSTRUCTING SUCH FACILITIES AND ANY OTHER MEASURES THAT ARE NECESSARY TO PREVENT CONTROL AND ABATE WATER, MUD AND EROSION DAMAGE TO PUBLIC AND PRIVATE PROPERTY AS A RESULT OF THE CONSTRUCTION OF THIS PROJECT.
 15. SLOPES CONSTRUCTED PRIOR TO OCTOBER 1ST SHALL BE TREATED FOR EROSION CONTROL PRIOR TO OCTOBER 1ST. SLOPES CONSTRUCTED AFTER OCTOBER 1ST SHALL BE TREATED FOR EROSION CONTROL PRIOR TO OCTOBER 1ST. SLOPES CONSTRUCTED AFTER OCTOBER 1ST SHALL BE TREATED FOR EROSION CONTROL PRIOR TO OCTOBER 1ST.
 16. FILL AREAS SHALL BE BROUGHT UP TO GRADE AND DURING PERIODS OF COMPLETION PRIOR TO FINALE GRADE, SHALL BE PROTECTED BY VARIOUS MEASURES TO ELIMINATE EROSION AND THE SILTATION OF DOWNSTREAM FACILITIES AND ADJACENT AREAS. THE MEASURE MAY INCLUDE, BUT MAY NOT BE LIMITED TO: TEMPORARY DOWN-DRAINS, EITHER IN THE FORM OF PILES OR PAVED DITCHES WITH PROTECTED DOWN-DRAIN; PROTECTIVE MEASURES TO PREVENT EROSION SUCH AS SLOTTED CURBS; PROTECTIVE MEASURES TO PREVENT EROSION SUCH AS SLOTTED CURBS; PROTECTIVE MEASURES TO PREVENT EROSION SUCH AS SLOTTED CURBS; PROTECTIVE MEASURES TO PREVENT EROSION SUCH AS SLOTTED CURBS.
 17. TOP OF CUT-OFF BROW DITCHES, WHERE REQUIRED ON THE PLANS, SHALL BE CONSTRUCTED PRIOR TO EXCEEDING TWELVE FEET (12') OF CUT, MEASURED VERTICALLY.
 18. EXISTING UNDERGROUND UTILITIES SHALL BE IDENTIFIED AND PROTECTED. ALL EXISTING UNDERGROUND UTILITIES SHALL BE IDENTIFIED AND PROTECTED. ALL EXISTING UNDERGROUND UTILITIES SHALL BE IDENTIFIED AND PROTECTED.
 19. PROTECTIVE MEASURES SHALL BE REQUIRED TO MAINTAIN EXISTING UTILITIES AND TO PREVENT DAMAGE TO EXISTING UTILITIES. THESE MEASURES MAY INCLUDE, BUT NOT BE LIMITED TO: GRADED DITCHES, BRUSH BARRIERS AND SILT FENCES. CARE SHALL BE EXERCISED TO PRESERVE VEGETATION BEYOND THE LIMITS OF GRADING.
 20. AT THE COMPLETION OF ROUGH GRADING, BUT DURING UNDERGROUND UTILITY INSTALLATION, PROTECTIVE MEASURES SHALL BE REQUIRED TO MAINTAIN EXISTING UTILITIES AND TO PREVENT DAMAGE TO EXISTING UTILITIES. THESE MEASURES MAY INCLUDE, BUT NOT BE LIMITED TO: GRADED DITCHES, BRUSH BARRIERS AND SILT FENCES. CARE SHALL BE EXERCISED TO PRESERVE VEGETATION BEYOND THE LIMITS OF GRADING.
 21. APPROVAL OF THESE PLANS DOES NOT RELIEVE THE DEVELOPER FROM RESPONSIBILITY FOR THE CORRECTED PLAN REVISIONS SHALL BE PROMPTLY SUBMITTED TO THE CITY OF LOS ANGELES FOR APPROVAL. THE CORRECTED PLAN REVISIONS SHALL BE PROMPTLY SUBMITTED TO THE CITY OF LOS ANGELES FOR APPROVAL.
 22. THE DEPTH OF WATER IN ANY DEVICE EXCEEDS TWO FEET (2').

GRAPHIC SCALE
(IN FEET)
1 inch = 20 ft

DIG ALERT
CALL BEFORE YOU DIG
1-800-422-4133
UNDERGROUND SERVICE ALERT
Call at least 2 working days prior to excavating

ENGINEERING DEPARTMENT
APPROVED _____
DATE: _____
EROSION CONTROL PLAN
SHEET 3 OF 3